



STUDIO 1,2 BED  
& APARTMENTS  
COMMERCIAL SPACES



Upto **8%**  
Guaranteed  
Rental Income



## PRESENTED BY APEX GROUP

Being an advocate of transforming real estate into the most professional and credible business in Pakistan, Apex Group leaves no stone unturned to turn its vision into a beautiful reality. Having spent 19 years in the real estate sector, Apex Group successfully developed, marketed & delivered multiple projects in mega cities of Pakistan.

Apex Group always focused on a benchmark that real estate projects should be endowed with the idea of well-planned community-building rather than simply constructing the infrastructure and letting people live in it. The result of its commitment to vision is, Apex Group finds its name today among the top real estate developers in the country.

## WHY INVEST IN URBAN HEIGHTS?

- Prime Location - Near Safari Villas, Bahria Town, Lahore.
- High Investment Yield up to 8%.
- Ready for Possession Apartments & Commercial Spaces.
- Developed by one of the trusted real estate developers, Apex Group.
- Roof Top BBQ Area available for BBQ Parties.
- Safe & Secure Investment Option in Flexible Payment Plan.
- Commercial and Co-working Spaces on the Ground Floor & Basement.
- High-Speed Elevators Installed for members and their families.
- A Gated Community with 24/7 Surveillance by CCTV & Security Staff.
- Monthly Income on Full Payment.





# LOCATION

This most-demanding project is in the construction phase in Bahria Town Lahore, between the main gate & Safari Villas. Its direct access to Raiwind Road, Defence Road, and Lahore Ring Road make Urban Height's location appealing.

- 1 Min Drive From  
**Bahria Hospital**
- 1 Min Drive From  
**Safari Villas**
- 2 Min Drive From  
**Jamia Mosque**
- 2 Min Drive From  
**Ring Road**
- 3 Min Drive From  
**Eiffel Tower**





## FACILITIES & AMENITIES



Mosque



Roof Top  
Garden



Dedicated  
Parking



Gym



Bahria International  
Hospital



24/7 CCTV





# FLOOR PLANS

## LOWER GROUND



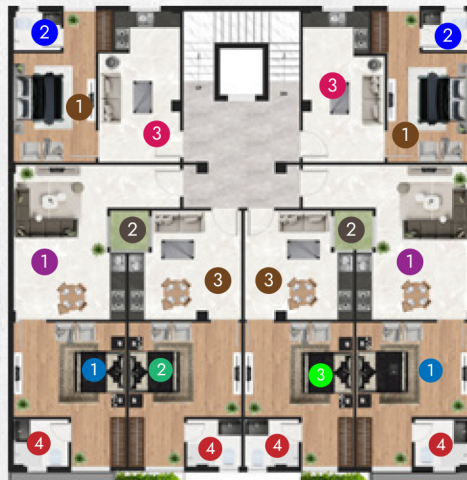
- 1 SHOP 1, 2, 3, 4 210SFT
- 2 SHOP 5, 6, 7, 8, 9, 10, 11, 12 193SFT
- 3 SHOP 13, 14, 15 205SFT

## GROUND FLOOR



- 1 SHOP 1, 2, 3, 4 360SFT
- 2 SHOP 5, 6, 7, 8 190SFT
- 3 SHOP 9, 10, 11, 12 200SFT

## 1<sup>ST</sup>, 2<sup>ND</sup> & 3<sup>RD</sup> FLOOR



- 1 BEDROOM 10'-6" X 19'-4 1/2"
- 2 BATHROOM 6' X 5'
- 3 LOUNGE 10'-6" X 19'-4 1/2"
- 1 LOUNGE 12' X 19'-10 1/2"
- 2 OPEN PATIO 5' X 5'
- 3 LOUNGE 11'-6" X 14'
- 1 BEDROOM 14'-4 1/2" X 12'-1 1/2"
- 2 BEDROOM 14'-6" X 12'-1 1/2"
- 3 BEDROOM 14'-0" X 12'-1 1/2"
- 4 BATHROOM 7' X 6'

## 4<sup>TH</sup> FLOOR



- 1 BEDROOM 10.50' X 19.40'
- 2 BATHROOM 6' X 5'
- 3 STUDIO APARTMENT 19.40' X 10.50'
- 4 KITCHEN 5.6' X 6'
- 5 LOUNGE 12' X 12'
- 6 LOUNGE 11' X 12.10'
- 7 BEDROOM 12' X 13.3'
- 8 BEDROOM 11' X 13.3'
- 9 BATHROOM 7' X 6'



# PAYMENT PLAN

	SIZE (sqft)	BOOKING	24* MONTHLY INSTALLMENT	6TH INSTALLMENT	12TH INSTALLMENT	18TH INSTALLMENT	TOTAL PRICE
GROUND FLOOR SHOP	190	500,000	58,900	1,413,600	1,178,000	1,384,800	5,890,000
	200	500,000	62,000	1,488,000	1,240,000	1,484,000	6,200,000
	360	500,000	129,600	3,110,400	2,592,000	3,647,200	12,960,000
LOWER GROUND FLOOR	193	500,000	36,670	880,080	733,400	673,440	3,667,000
	205	500,000	38,950	934,800	779,000	746,400	3,895,000
	210	500,000	39,900	957,600	798,000	776,800	3,990,000



	SIZE (sqft)	BOOKING	24* MONTHLY INSTALLMENT	6TH INSTALLMENT	12TH INSTALLMENT	18TH INSTALLMENT	TOTAL PRICE	
1ST TO 3RD FLOOR	691 1 Bed	500,000	110,560	2,653,440	2,211,200	3,037,920	11,056,000	
	509 1 Bed	500,000	83,985	2,015,640	1,679,700	2,187,520	8,398,500	
	600 1 Bed	500,000	99,000	2,376,000	1,980,000	2,668,000	9,900,000	
4TH FLOOR	284 Studio	500,000	48,280	1,158,720	965,600	1,044,960	4,828,000	(SOLD)
	465 1 Bed	500,000	79,050	1,897,200	1,581,000	2,029,600	7,905,000	
	475 1 Bed	500,000	80,750	1,938,000	1,615,000	2,084,000	8,075,000	
	814 2 Bed	500,000	138,380	3,321,120	2,767,600	3,928,160	13,838,000	(SOLD)

#### Terms and Conditions Apply:

Area may vary at the time of Possession.

Price are subject to change without any prior notice.

The actual measurement of apartments will be done after completion & prices will be adjusted accordingly.

10% amount will be added on premium factor.

All prices are in PKR.





**BROUGHT  
TO YOU BY**



**FOR MORE INFORMATION & BOOKING  
CALL OR VISIT US TODAY**

**TITANIUMAGENCY.COM.PK | +92 311 1199 789**